

SKYSHL

Operation Tips

- 1 Before connecting the optical fiber to the OTDR, should use the dust-free paper or dust-free cotton which dipped into the alcohol to clean the top of the fiber connector. Otherwise the dust will cause the OTDR test to be inaccurate or even fail.
- 2 Please pay special attention when connecting, should insert lightly and pull out slowly, inserting too fast or pulling out forceful will cause the ceramic tube in the OTDR adapter broken, making it impossible to test.
- 3 Do not test the optical fiber with signal in. Before testing, can use the optical power meter function to perform initial test on the fiber to see if there is optical signal in it.
- 4 The fiber with APC connector can not be inserted into the OTDR adapter port of UPC, vice versa. If the connector type is not correct, need to convert before test.
- 5 When using the FC connector, pay attention to the convex part of the FC connector should be aligned with the gap of the OTDR adapter, and then screw it to the end, otherwise could not get the test result.
- 6 The OTDR parameter setting is under the Auto (default) mode, can proceed the test mostly.
- 7 When testing short distance(like within 20 meters), can change the OTDR parameter setting:
 - ① Measurement Mode to Manual
 - ② Range to 100m
- 8 When test the fiber with the optical splitter
 - ① First use the automatic mode for testing
 - ② If the whole fiber cannot be tested, make a record of the selection, range and pulse width under the current automatic mode
 - ③ Switch to manual mode, first adjust the measurement range to a range that is definitely longer than the measured distance (such as 10km or 20km, or even longer), and then adjust the pulse width of the automatic measurement range matching to 1-2 grade up (For example, if 200ns is selected automatically, then manually adjust to 500ns or 1us)
- 9 Clean the inside of the OTDR adapter with a clean cotton swab regularly.
- 10 The OTDR should be stored in dry and normal temperature, because the OTDR will have dew condensation when from low temperature to a higher temperature environment (such as: outdoor in winter to indoors; air conditioning room in summer to outdoor)
- 11 Do not expose the OTDR in the rain to avoid the water goes inside.

If you have any question, please contact SKYSHL immediately.

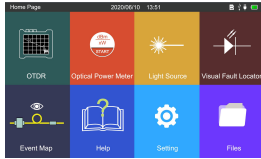
Email: af@skyshl.net (7X24hours)

Website: www.skyshl.net

Whatsapp: +086-18923700205

Skype: sales1@skyshl.net

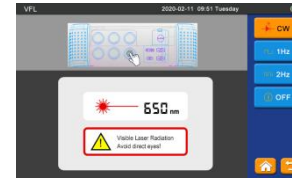
ON/OFF: Press the red button until one second



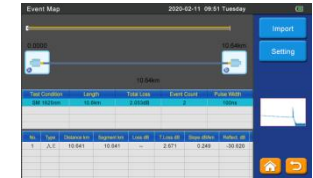
99% test can be preceded by press the Start button directly



VFL: CW is always on, OFF is off, 2Hz flashes slowly, 1Hz flashes quickly.



Event Map: By importing the corresponding SOR file, the event map graphically displays the link status of the fiber according to the event list. The connector type is displayed as accurately as possible by setting the attenuation threshold of the corresponding connection point.



Before connecting the OTDR: should clean the top of the fiber connector first, the convex part on the fiber connector must be aligned with the groove of the OTDR adapter port



Manual mode only needs to adjust the range, the pulse width will follow



Optical Power Meter: Proceed the test setting on the right side of the list and the test results are intuitive.



Scan QR to download Manual & Software



Switch to manual mode when very short distance or approximate distance is known



Optical Source: According to the test requirement, choose the suitable wavelength.

